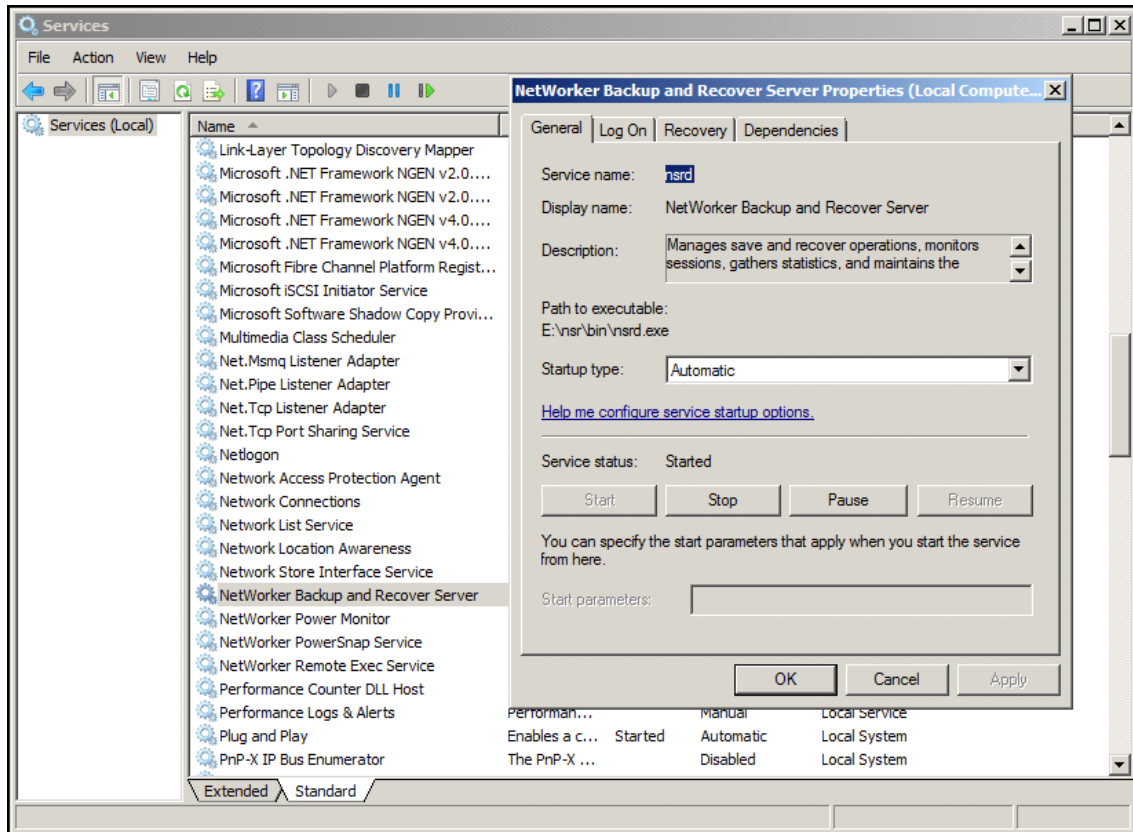


'sc' oder 'services.msc' ?

Selbstverständlich kennen Sie den *Service Manager*, die grafische Schnittstelle zur Abfrage der installierten Dienste:



Um aber eine Prozeß ID herauszufinden, müssen Sie nicht unbedingt die Schnittstelle wechseln - der Windows Befehl `sc` tut es auch (siehe nächste Seite).

```
C:\>sc -?
```

```
ERROR: Unrecognized command
```

DESCRIPTION:

SC is a command line program used for communicating with the Service Control Manager and services.

USAGE:

```
sc <server> [command] [service name] <option1> <option2>...
```

The option <server> has the form "\\ServerName"

Further help on commands can be obtained by typing: "sc [command]"

Commands:

```
query-----Queries the status for a service, or
              enumerates the status for types of services.
queryex-----Queries the extended status for a service, or
              enumerates the status for types of services.
start-----Starts a service.
pause-----Sends a PAUSE control request to a service.
interrogate----Sends an INTERROGATE control request to a service.
continue-----Sends a CONTINUE control request to a service.
stop-----Sends a STOP request to a service.
config-----Changes the configuration of a service (persistent).
description----Changes the description of a service.
failure-----Changes the actions taken by a service upon failure.
failureflag----Changes the failure actions flag of a service.
sidtype-----Changes the service SID type of a service.
privs-----Changes the required privileges of a service.
qc-----Queries the configuration information for a service.
qdescription---Queries the description for a service.
qfailure-----Queries the actions taken by a service upon failure.
qfailureflag---Queries the failure actions flag of a service.
qsidtype-----Queries the service SID type of a service.
qprivs-----Queries the required privileges of a service.
qtriggerinfo---Queries the trigger parameters of a service.
qpreferrednode--Queries the preferred NUMA node of a service.
delete-----Deletes a service (from the registry).
create-----Creates a service. (adds it to the registry).
control-----Sends a control to a service.
sdshow-----Displays a service's security descriptor.
sdset-----Sets a service's security descriptor.
showsid-----Displays the service SID string corresponding to an //
arbitrary name.
triggerinfo----Configures the trigger parameters of a service.
preferrednode---Sets the preferred NUMA node of a service.
GetDisplayName--Gets the DisplayName for a service.
GetKeyName-----Gets the ServiceKeyName for a service.
EnumDepend-----Enumerates Service Dependencies.
```

.....

.....

```
The following commands don't require a service name:
sc <server> <command> <option>
  boot----- (ok | bad) Indicates whether the last boot should
                  be saved as the last-known-good boot configuration
  Lock----- Locks the Service Database
  QueryLock----- Queries the LockStatus for the SCManager Database
```

EXAMPLE:

```
sc start MyService
```

Would you like to see help for the QUERY and QUERYEX commands? [y | n]:

n

C:\>

Hier ein Beispiel für die Abfrage nach dem NetWorker Server Daemon für den NetWorker 8.x:

```
C:\>sc qc nsrd
[SC] QueryServiceConfig SUCCESS

SERVICE_NAME: nsrd
        TYPE               : 10    WIN32_OWN_PROCESS
        START_TYPE          : 2     AUTO_START
        ERROR_CONTROL       : 0     IGNORE
        BINARY_PATH_NAME    : E:\nsr\bin\nsrd.exe
        LOAD_ORDER_GROUP    :
        TAG                 : 0
        DISPLAY_NAME        : NetWorker Backup and Recover Server
        DEPENDENCIES        : nsrexecd
        SERVICE_START_NAME  : LocalSystem
```

C:\>

Und hier der gleiche Befehl für den NetWorker 9.x:

```
C:\>sc qc nsrd
[SC] QueryServiceConfig SUCCESS

SERVICE_NAME: nsrd
        TYPE               : 10    WIN32_OWN_PROCESS
        START_TYPE          : 2     AUTO_START
        ERROR_CONTROL       : 0     IGNORE
        BINARY_PATH_NAME    : D:\Legato\nsr\bin\nsrctld.exe
        LOAD_ORDER_GROUP    :
        TAG                 : 0
        DISPLAY_NAME        : NetWorker Backup and Recover Server
        DEPENDENCIES        : nsrexecd
                          : nsrmqd
        SERVICE_START_NAME  : LocalSystem
```

C:\>