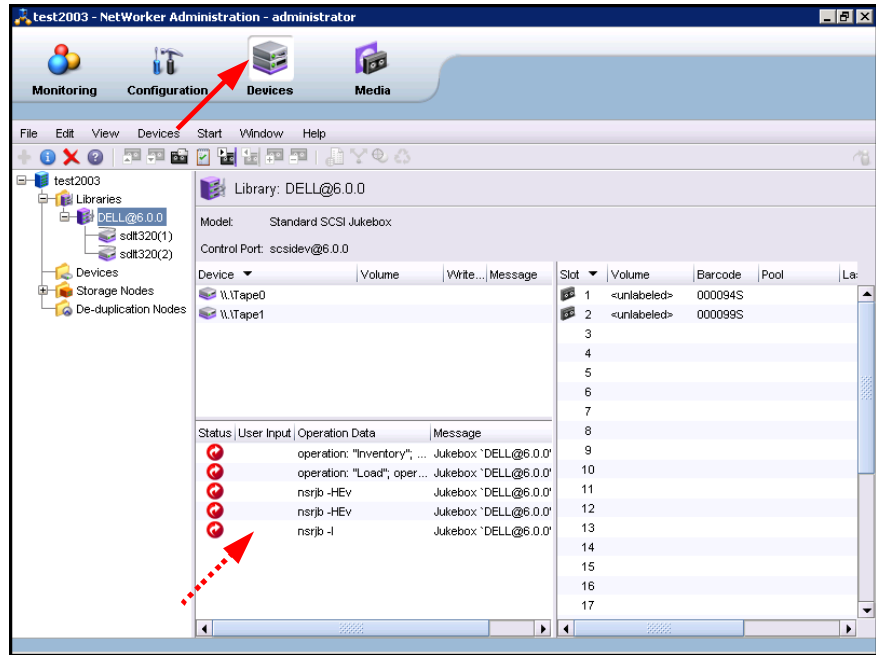


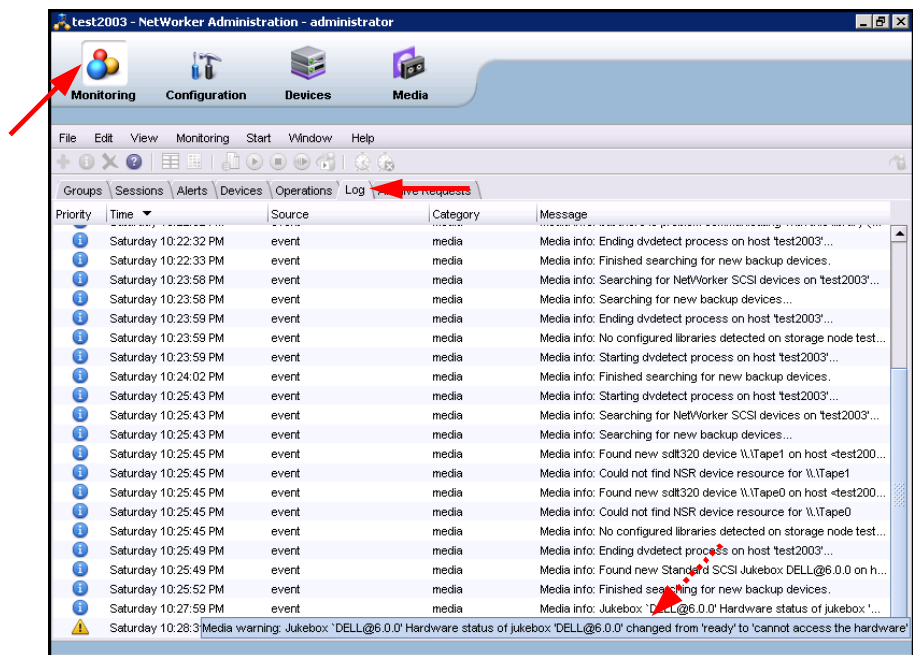
Disablen Sie den Removable Storage Manager !!!

Vor kurzem hat mich dieses Thema bei einem Upgrade wieder eingeholt.

Die Jukebox ließ sich problemlos installieren und arbeitete eine Weile ohne jede Auffälligkeit. Nach einiger Zeit jedoch gab es Probleme, die ich mit einem Reset und einem Inventory beheben wollte. Doch auf einmal funktionierten scheinbar nicht einmal diese grundlegenden Befehle mehr:

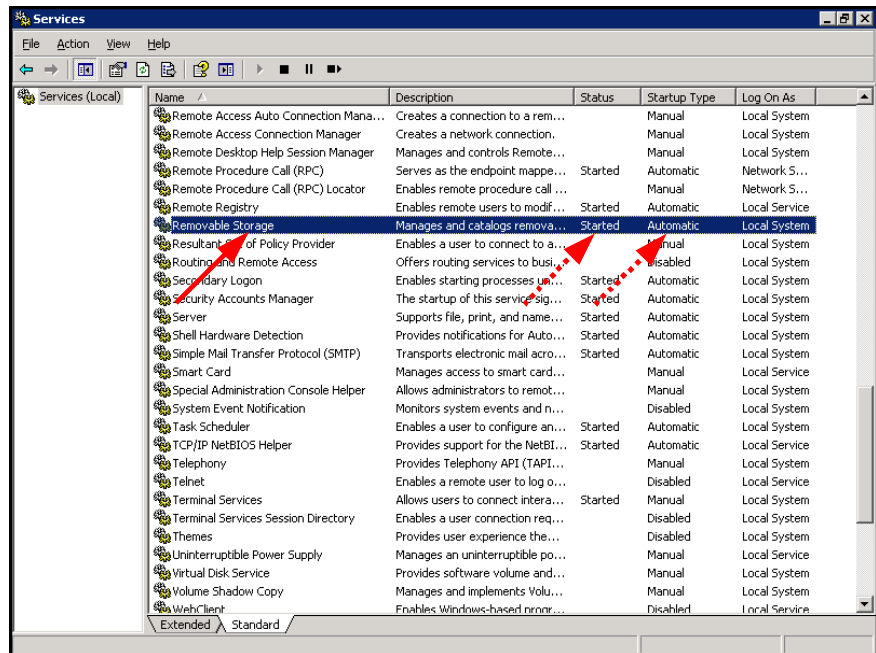


Ein Blick in die Log Meldungen führte schließlich zu dieser Warnung:



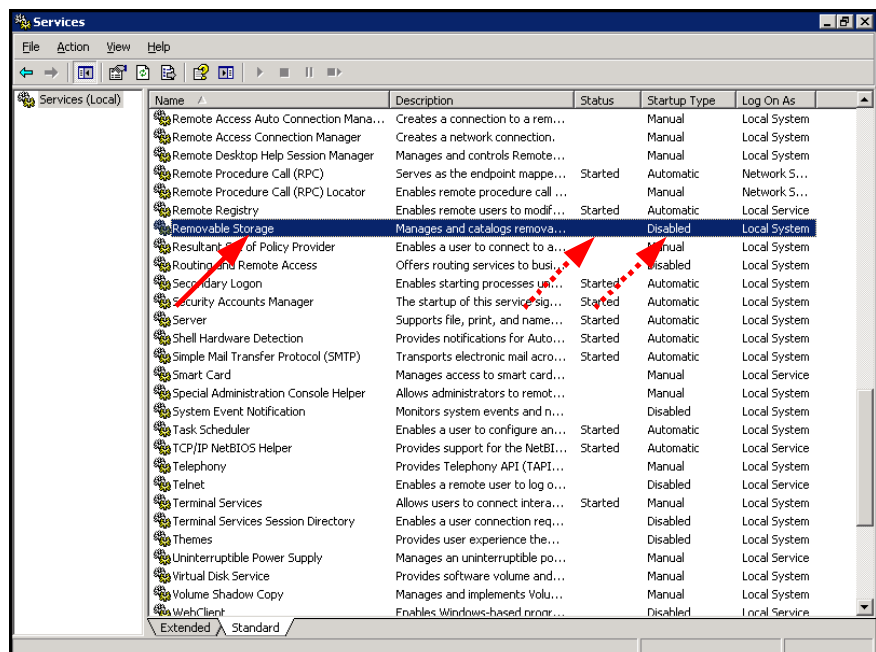
Nach dem *Error Message Guide* bedarf sie jedoch keiner weiteren Maßnahme.

Ein Blick in die Dienste zeigt dann aber, daß der *Removable Storage* Dienst gestartet war:

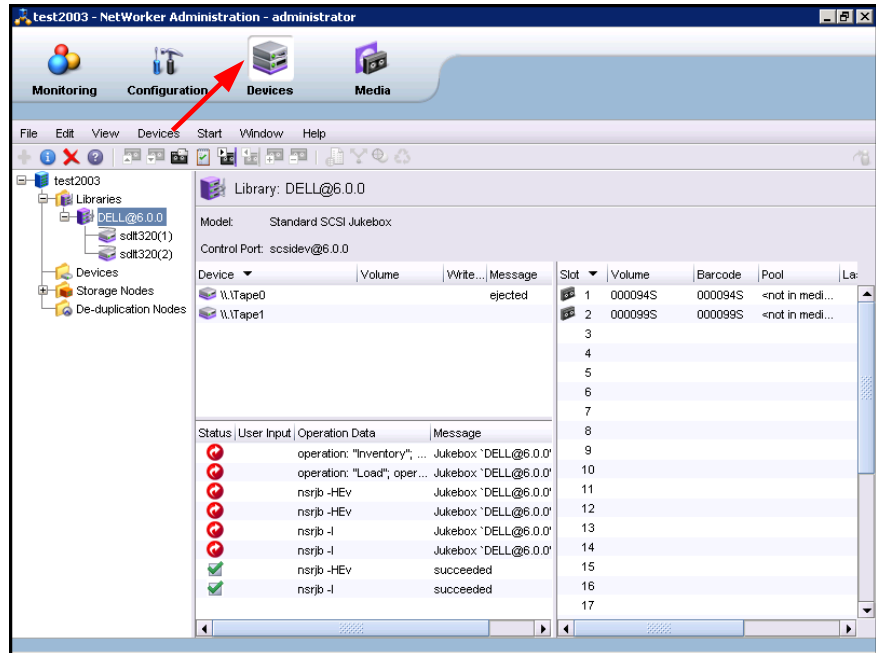


Das war eigenartig - ich konnte mich zumindest daran erinnern, daß bei früheren Installationen die Einrichtung einer NetWorker Jukebox gar nicht möglich war, wenn dieser Dienst noch aktiv war.

Also stoppte ich ihn erst einmal und deaktivierte ihn natürlich auch:



Und das war dann auch schon des Rätsels Lösung:



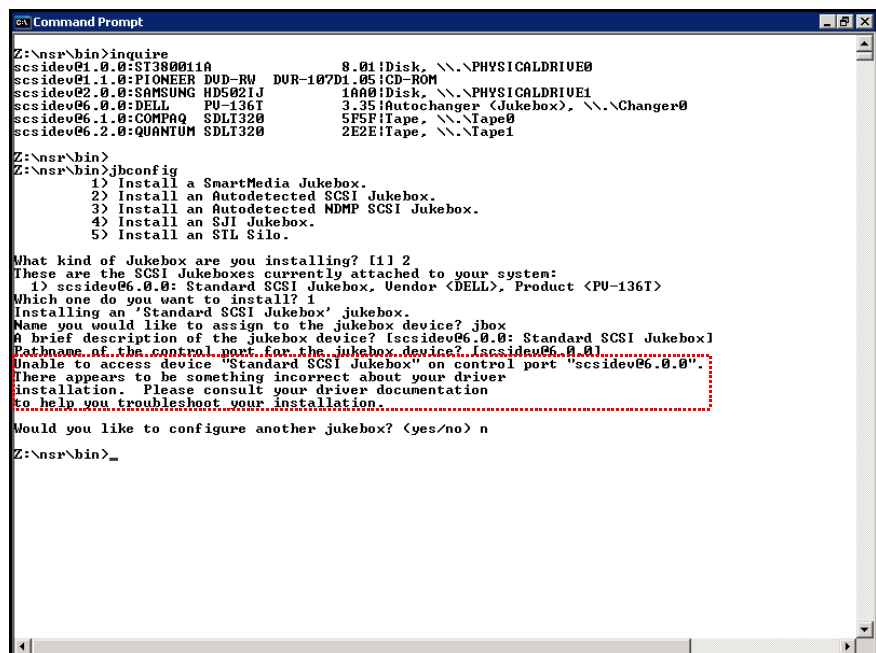
Weitere Untersuchungen ergaben, daß derjenige, der die Jukebox physikalisch installiert hatte, den Dienst wohl gestoppt, aber nicht gesperrt hatte.



Sofern möglich, startet der NetWorker *Inquire* Befehl den RSM Service wieder!

Hierbei variieren die Rückmeldungen bei der Installation sehr stark - und von der GUI werden Sie sie so gar nicht gewahr! - Es folgt ein Abriß durch mehrere NetWorker Versionen:

6.2.0



7.2.2

```

Command Prompt
Z:\nsr\bin>inquire
Could not start a Removable Storage session (0x00000015).
scsidev01.0.0:ST380011A      8.01 iDisk, \\.\PHYSICALDRIVE0
scsidev01.1.0:PIONEER DUD-RW DUR-107D1.05 iCD-ROM
scsidev02.0.0:SAMSUNG HDS021J 1A00 iDisk, \\.\PHYSICALDRIVE1
scsidev06.0.0:DELL PU-136T 3.35 iAutochanger (Jukebox), \\.\Changer0
scsidev06.1.0:COMPAQ SDLT320 5F5F iTape, \\.\Tape0
                                     S/N: RBD45V1579
                                     AINN:COMPAQ SDLT320 RBD45V1579
                                     IENN:00E09E600011CE1F
                                     WNN:500E09E00011CE1F
scsidev06.2.0:QUANTUM SDLT320 2E2E iTape, \\.\Tape1
                                     S/N: RBE16V1037
                                     AINN:QUANTUM SDLT320 RBE16V1037
                                     IENN:00E09E600013B5D7
                                     WNN:500E09E00013B5D7

Z:\nsr\bin>jbconfig
1) Configure an AlphaStor/SmartMedia Jukebox.
2) Configure an Autodetected SCSI Jukebox.
3) Configure an Autodetected NDMP SCSI Jukebox.
4) Configure an SJI Jukebox.
5) Configure an STL Silo.
6) Configure a Microsoft Removable Storage Jukebox.

What kind of Jukebox are you configuring? [1] 2
-----
There appear to be no SCSI jukeboxes connected to this system.
This could mean the SCSI jukebox(es) are not connected to the system,
cannot be seen (pending a reboot) or have already been configured.
On Windows Systems, this could mean that the SCSI jukebox(es) are
enabled for Microsoft Removable Storage.
-----
Please rerun the program after making the necessary changes.
-----
Z:\nsr\bin>_

```

7.3.4

```

Command Prompt
Z:\nsr\bin>inquire
In update_scsi_bus_map: open_bus invalid on nadapters = 8
scsidev01.0.0:ST380011A      8.01 iDisk, \\.\PHYSICALDRIVE0
scsidev01.1.0:PIONEER DUD-RW DUR-107D1.05 iCD-ROM
scsidev02.0.0:SAMSUNG HDS021J 1A00 iDisk, \\.\PHYSICALDRIVE1
scsidev06.0.0:DELL PU-136T 3.35 iAutochanger (Jukebox)
scsidev06.1.0:COMPAQ SDLT320 5F5F iTape, \\.\Tape0
                                     S/N: RBD45V1579
                                     AINN:COMPAQ SDLT320 RBD45V1579
                                     IENN:00E09E600011CE1F
                                     WNN:500E09E00011CE1F
scsidev06.2.0:QUANTUM SDLT320 2E2E iTape, \\.\Tape1
                                     S/N: RBE16V1037
                                     AINN:QUANTUM SDLT320 RBE16V1037
                                     IENN:00E09E600013B5D7
                                     WNN:500E09E00013B5D7

Z:\nsr\bin>
Z:\nsr\bin>jbconfig
Jbconfig is running on host test2003 (Windows Server 2003 5.2),
and is using test2003 as the NetWorker server.

1) Configure an AlphaStor Library.
2) Configure an Autodetected SCSI Jukebox.
3) Configure an Autodetected NDMP SCSI Jukebox.
4) Configure an SJI Jukebox.
5) Configure an STL Silo.
6) Configure a Microsoft Removable Storage Jukebox.

What kind of Jukebox are you configuring? [1] 2
-----
In update_scsi_bus_map: open_bus invalid on nadapters = 8
Scanning SCSI buses; this may take a while ...
-----
There appear to be no SCSI jukeboxes connected to this system.
This could mean the SCSI jukebox(es) are not connected to the system,
cannot be seen (pending a reboot) or have already been configured.
On Windows Systems, this could mean that the SCSI jukebox(es) are
enabled for Microsoft Removable Storage.
-----
Please rerun the program after making the necessary changes.
-----
Z:\nsr\bin>_

```

7.4.5

```

Z:\nswr\bin>inquire
scsidev01.0:ST380011A      8.01:Disk, \\.\PHYSICALDRIVE0
scsidev01.1:PIIONEER DUD-RW  DUR-107D1.05:CD-ROM
scsidev02.0:SAMSUNG HD5021J  1A00:Disk, \\.\PHYSICALDRIVE1
scsidev06.0:DELL PU-136T    3.35:Autochanger (Jukebox)
scsidev06.1:COMPAQ SDLT320  5F5F:Tape, \\.\Tape0
                               S/N: RBD45V1579
                               AINN=COMPAQ SDLT320      RBD45V1579
                               IENN=00E09E600011CE1F
                               WNN=500E09E00011CE1F
scsidev06.2:QUANTUM SDLT320  2E2E:Tape, \\.\Tape1
                               S/N: RBE16V1037
                               AINN=QUANTUM SDLT320      RBE16V1037
                               IENN=00E09E600013B5D7
                               WNN=500E09E00013B5D7

Z:\nswr\bin>
Z:\nswr\bin>jbconfig

Jbconfig is running on host test2003 (Windows Server 2003 5.2),
and is using test2003 as the NetWorker server.

1) Configure an AlphaStor Library.
2) Configure an Autodetected SCSI Jukebox.
3) Configure an Autodetected NDMP SCSI Jukebox.
4) Configure an SJI Jukebox.
5) Configure an STL Silo.
6) Configure a Microsoft Removable Storage Jukebox.

What kind of Jukebox are you configuring? [1] 2
14484:jbconfig: Scanning SCSI buses; this may take a while ...
14486:jbconfig:
There appear to be no SCSI jukeboxes connected to this system.
This could mean the SCSI jukebox(es) are not connected to the system,
cannot be seen (pending a reboot), or have already been configured.
14487:jbconfig: On Windows Systems, this could mean that the SCSI jukebox(es) are
enabled for Microsoft Removable Storage.
14488:jbconfig:
Please rerun the program after making the necessary changes.

Z:\nswr\bin>_
    
```

7.5.3 & 7.6.0

```

Z:\nswr\bin>inquire
scsidev01.0:ST380011A      8.01:Disk, \\.\PHYSICALDRIVE0
scsidev01.1:PIIONEER DUD-RW  DUR-107D1.05:CD-ROM
scsidev02.0:SAMSUNG HD5021J  1A00:Disk, \\.\PHYSICALDRIVE1
scsidev06.0:DELL PU-136T    3.35:Autochanger (Jukebox)
scsidev06.1:COMPAQ SDLT320  5F5F:Tape, \\.\Tape0
                               S/N: RBD45V1579
                               AINN=COMPAQ SDLT320      RBD45V1579
                               IENN=00E09E600011CE1F
                               WNN=500E09E00011CE1F
scsidev06.2:QUANTUM SDLT320  2E2E:Tape, \\.\Tape1
                               S/N: RBE16V1037
                               AINN=QUANTUM SDLT320      RBE16V1037
                               IENN=00E09E600013B5D7
                               WNN=500E09E00013B5D7

Z:\nswr\bin>
Z:\nswr\bin>jbconfig

Jbconfig is running on host test2003 (Windows Server 2003 5.2),
and is using test2003 as the NetWorker server.

1) Configure an AlphaStor Library.
2) Configure an Autodetected SCSI Jukebox.
3) Configure an Autodetected NDMP SCSI Jukebox.
4) Configure an SJI Jukebox.
5) Configure an STL Silo.

What kind of Jukebox are you configuring? [1] 2
14484:jbconfig: Scanning SCSI buses; this may take a while ...
39078:jbconfig: Jukebox error: scsi command MODE SENSE failed

Z:\nswr\bin>_
    
```



Leider sind gerade die aktuellen NetWorker Versionen in dieser Hinsicht am wenigsten hilfreich.