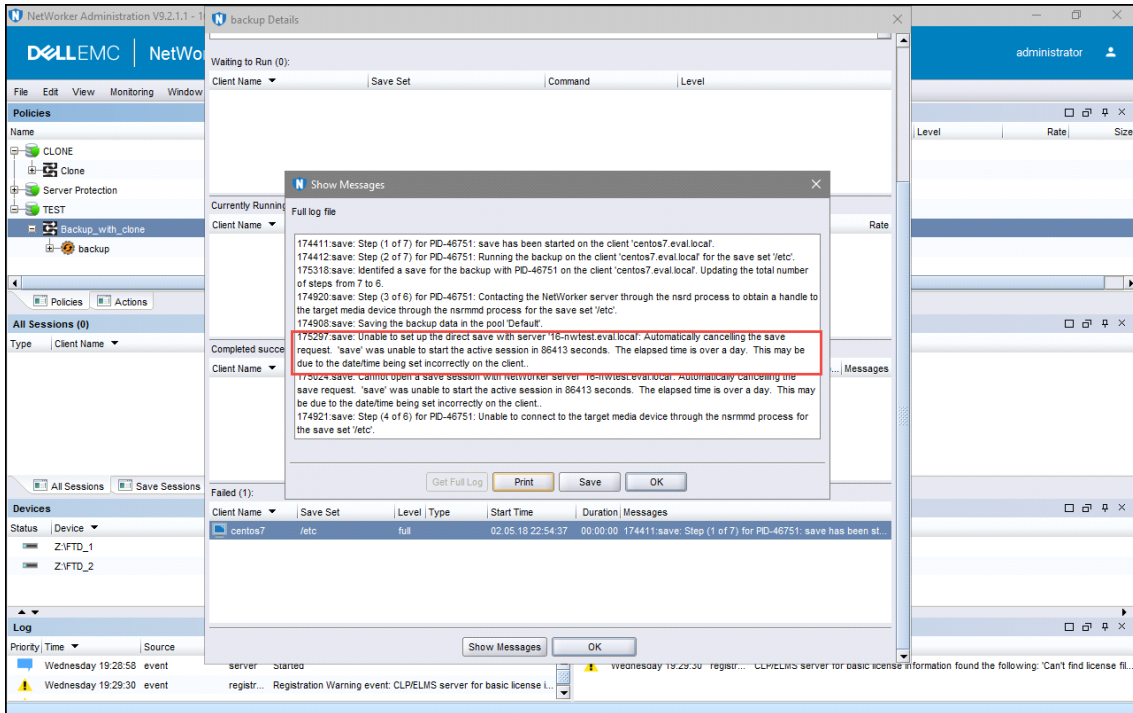
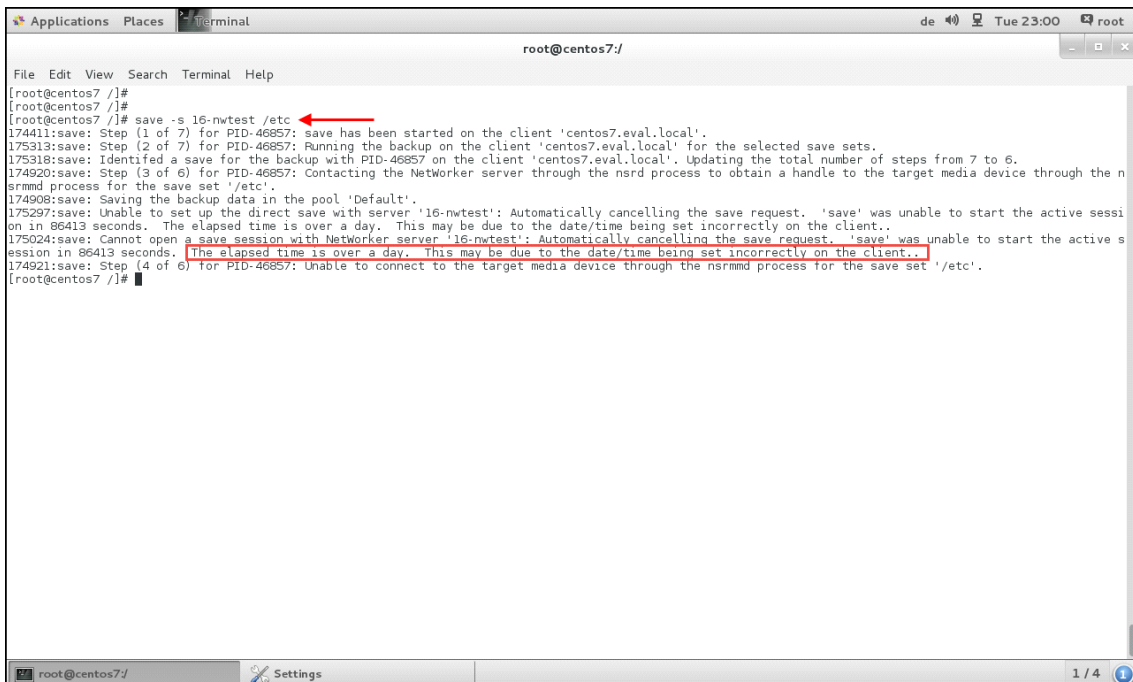


Kein Backup - der Server ist 'busy'

Achten Sie darauf, daß die Zeit zwischen NetWorker Server und Client synchron läuft. Ist das nicht der Fall, zeigt Ihnen die aktuelle NetWorker Version im schlimmsten Fall diese eindeutige Fehlermeldung:



Das gilt natürlich auch für die manuelle Sicherung (von der Befehlszeile):



Bei älteren Versionen ist das Problem leider nicht so eindeutig feststellbar - schlimmstenfalls erhalten Sie nur eine 'busy' Meldung ...

```

Administrator: Command Prompt
C:\>save -b DATA C:\TEMP
174411:save: Step (1 of 5) for PID-612: save has been started on the client '16-client1.eval.local'.
175312:save: Identified a save for the manual backup with PID-612 on the client '16-client1.eval.local'. Updating the total number of steps from 5 to 7.
175313:save: Step (2 of 7) for PID-612: Running the backup on the client '16-client1.eval.local' for the selected save sets.
3817:save: Using 16-nw921 as server
5777:save: Multiple client instances of 16-client1.eval.local, using the first entry
174424:save: Step (3 of 7) for PID-612: Creating the snapshot for the selected save sets.
174920:save: Step (4 of 7) for PID-612: Contacting the NetWorker server through the nsrd process to obtain a handle to the target media device through the ns
rmmid process for the save set 'C:\TEMP'.
174908:save: Saving the backup data in the pool 'DATA'.
175297:save: Unable to set up the direct save with server '16-nw921': busy.
90046:save: NSR server '16-nw921': busy
5766:save: waiting 30 seconds then retrying
174920:save: Step (4 of 7) for PID-612: Contacting the NetWorker server through the nsrd process to obtain a handle to the target media device through the ns
rmmid process for the save set 'C:\TEMP'.
174908:save: Saving the backup data in the pool 'DATA'.
175297:save: Unable to set up the direct save with server '16-nw921': busy.
90046:save: NSR server '16-nw921': busy
5766:save: waiting 42 seconds then retrying
C:\>

```

... und die deutet in keiner Weise auf das eigentliche Problem hin.